

*The house that grows with you, the house that grows on you
Flexibility and Appropriability*

"The type can thus be thought of as the frame within which change operates, a necessary term to the continuing dialectic required by history...rather than a frozen mechanism...a way of looking at the future" - Rafael Moneo-on typology

The house is bound to grow and the extent of change is projected. In instances, people are projected to add walls, alter opening sizes, nature of windows, color schemes, spatial arrangement, sizes of the domestic spaces, add shading devices, add doors but in all cases even in the most disruptive ones, the underlying layer of design ideals are observed as resilient



Flexible grids : Connection with street



Flexible grids : Conenctions disrupted, spaces appropriated



Flexible grids : Expansion of the shops



Flexible grids : Addition of sun shades



Flexible grids : Connection with street



Flexible grids : Conenctions disrupted, spaces appropriated



Flexible grids : Color of the shops



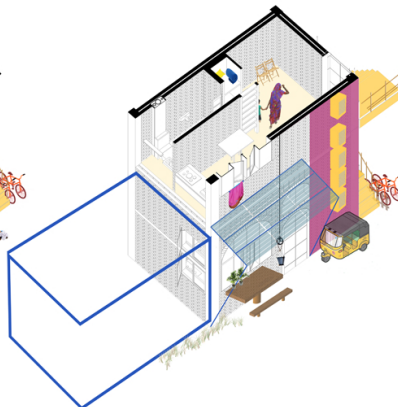
Flexible grids : Graffiti on the wall



Flexible grids : Connection with street



Flexible grids : Conenctions disrupted, spaces appropriated



Flexible grids : Addition of the coolers



Flexible grids : Shared spaces